



# Mobility *matters*

The magazine for  
ECTA members

February 2013

## New Year

## New Image

## New Project



# Our New Image

ECTA will be changing its trading name to ExeAccess on Monday 8th April 2013.

This will coincide with the launch of the 4 Rs project .

Nothing will change - we will still remain as Exeter Community Transport Association (ECTA) but for day to day purposes we will be known as ExeAccess from that date onward.

Why the Change? ECTA is all about Access for people with disabilities and mobility problems: it makes sense on many fronts to have a name that reflects the services our charity offers.

The name change will reflect well in our yearly quest for the funding which we desperately need to function and subsequently will strike a chord with those charitable trusts to which we write asking for grants.

# THE 4 Rs

The purpose of this project is to **Recover** unwanted, abandoned and unused mobility equipment.

**Restore:** Mobility equipment donated to ECTA to an acceptable standard.

**Re-use:** this equipment will be available for purchase at low price to people on low incomes,

**Recycle:** any equipment donated to ECTA that is not fit for use will be broken up and the good parts will be available for sale at low prices to help keep disabled people on low incomes mobile.

## **New pricing scheme**

Please note from the 1st of April 2013 our Shopmobility daily hire charge will increase to £5.00 and our Ring and Ride fares will be increasing to £2.70 or £3 for those travelling from the Broadclyst area

# Successful Fundraising this Quarter

J and D Hambro Charitable Trust  
£150

Sir John and Lady Heathcoat  
Charitable Trust £500

Mary Heap Charitable Trust £325

Gweneth Moxon Trust £2000

Norman Family Trust £1000

Beatrice Laing Trust £500

Glossop Pryor foundation £300

Albert Hunt Trust £2,000

**DONATIONS VERY  
WELCOME**

# For Sale!

4 wheeled walker blue	£65
4 wheeled walker green	£65
Bariatric Commode	£50
Commode As new	£50
Bathroom perching stool	£30
Perching Stool	£25
Commode	£20
Walking frame	£15
Walking stick	£5



# Long Term Hire

If you're coming to stay in Exeter or if you are going away somewhere, long term hire is available for manual wheelchairs and collapsible scooters. It costs £6 per day to hire a manual wheelchair and £10 per day for a boot scooter.



# Hire Our Tramper

**£6 for up to three hours  
or £10 for up to six hours**

Here are some of the accessible areas around  
Exeter that you might like to visit:-

Exeter Quay

Northcott Theatre

Topsham

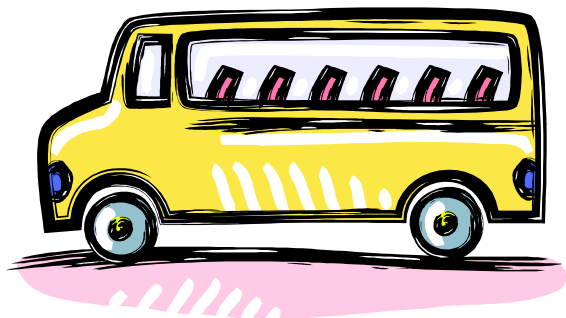
University of Exeter

Double Locks

Cricklepit Mill

**And many more**

The Tramper is a great way to get around Exeter and surrounding areas — up to 30 miles can be reached depending on terrain.



# **RING & RIDE**

## **PRIVATE HIRE**

**OUR RING & RIDE MINIBUS SERVICE IS AVAILABLE FOR HIRE BY ANYONE WITH A PHYSICAL DISABILITY, MOBILITY PROBLEM OR VISUAL IMPAIRMENT.**

**IT CAN BE USED DURING THE EVENINGS, WEEKENDS AND SCHOOL HOLIDAYS WITH ADVANCE NOTICE IN AND AROUND THE EXETER AREA.**

**PLEASE NOTE THAT THE BUS CAN TRAVEL NO FURTHER THAN BRISTOL.**





# **March**



# **Ring & Ride Lunch Club**

**Friday  
22nd March  
Harry Ramsden's  
Exeter  
£3.25**

**To book please phone 01392  
494001 or talk to the Driver.**